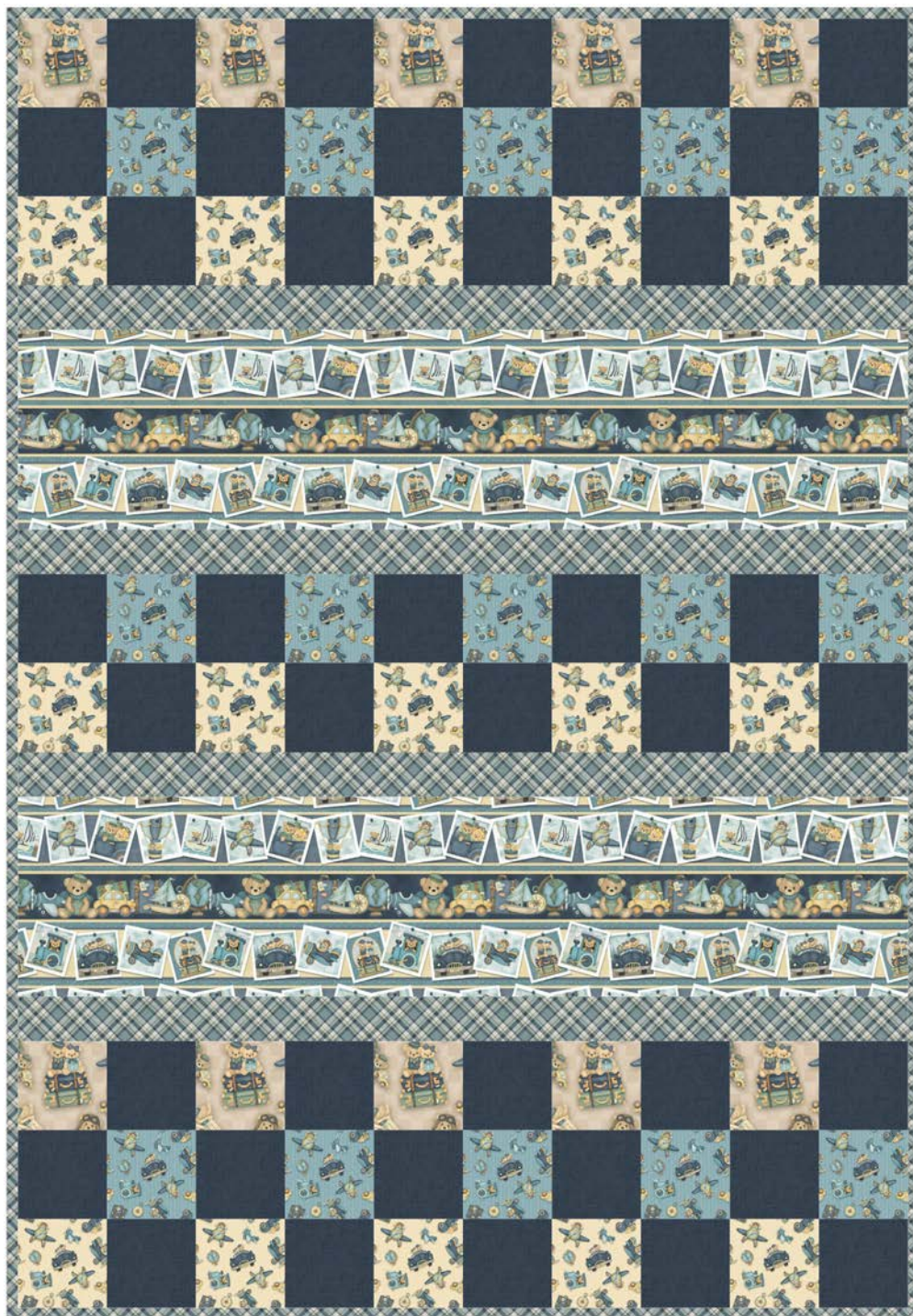


Traveling Teddies

by Shelly Comiskey



Quilt size: 40 1/2" x 58 1/2" (1.03m x 1.49m)



Skill Level: Advanced Beginner

Check Me Out Quilt

Designed by It's Sew Emma

www.itssewemma.com

Check Me Out Quilt Ordering Guide

SKU	Yards	Meters	6 Kits	12 Kits
 2418-74	1 1/4 yds	1.14m	1 bolt	2 bolts
 2420-74*	1 yd	0.91m	1 bolt	1 bolt
 2421-11	1/2 yds	0.46m	1 bolt	1 bolt
 2421-44	1/2 yds	0.46m	1 bolt	1 bolt
 2423-44	3/8 yds	0.34m	1 bolt	1 bolt
 1027-77 (10yd bolt)	1 1/4 yds	1.14m	1 bolt	2 bolts

Backing Fabric Option

2419-74	4 yds	3.66m	2 bolts	4 bolts
---------	-------	-------	---------	---------

* Indicates binding fabric.

FO = 18" x 22" (0.45m x 0.55m)

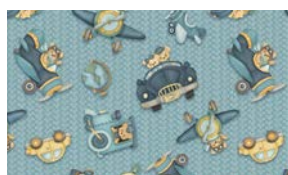
All fabric quantities are based on 15yd bolts unless otherwise indicated.



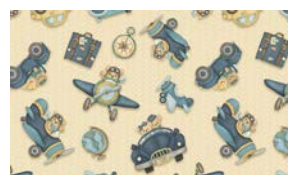
2418-74
Novelty Stripe
Multi



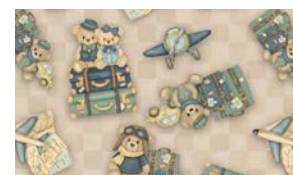
2420-74*
Bias Plaid
Multi



2421-11
Travel Teddies
Blue



2421-44
Travel Teddies
Beige



2423-44
Ready to Travel Teddies
Beige



1027-77
Timeless Linen Basics
Dk. Peri

Henry Glass & Co. Inc.

148 West 37th Street - New York, NY 10018 - Tel: 800-294-9495 - Fax: 212-679-4578 - www.henryglassfabrics.net